






Accessories - Angled swivels

Technical data and gross price list for all hose reels

Type 	Item number 	Nom. width [mm] 	Thread [Inch]		Pressure [bar] 	Material 
			Inlet	Outlet		
WDTH5/304	B1070003505	5	1/4" IG	3/8" AG	600	Stainless steel 304
WDTH10/AI	B10700035	10	3/8" IG	3/8" AG	300	Aluminium/Stainless st.
WDTH10/304	B1070003501	10	1/2" IG	3/8" AG	400	Stainless steel 304
WDTH10/316	B1070003507	10	1/2" IG	3/8" AG	400	Stainless steel 304
WDTH12/AI	B1070003504	12	1/2" IG	3/8" AG	200	Aluminium/Stainless st.
WDTH12/304	B10700035011	12	1/2" IG	3/8" AG	300	Stainless steel 304
WDTH12/316	B10700035006	12	1/2" IG	3/8" AG	300	Stainless steel 316
WDTH19/Br	B10700036	19	3/4" IG	3/4" AG	200	Brass/Stainless steel
WDTH19/304	B1070003601	19	3/4" IG	3/4" AG	200	Stainless steel 304
WDTH19/316	B1070003605	19	3/4" IG	3/4" AG	200	Stainless steel 316
WDTH24/Br	B1070003602	24	1" IG	1" AG	200	Brass/Stainless steel
WDTH24/304	B1070003603	24	1" IG	1" AG	200	Stainless steel 304
WDTH24/316	B1070003606	24	1" IG	1" AG	200	Stainless steel 316



WDTH5/304







WDTH12/AI



WDTH10/304

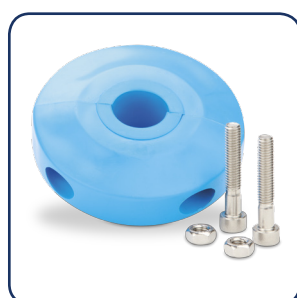


WDTH19/304

Description 	Addition 	Material 	Item number 
Seal kit			
Seal kit for angled swivel (Standard)	1/4", 3/8", 1/2"	Slide ring PTFE/ O-ring EPDM70 AP370	B10700037
Seal kit for angled swivel (180°C)	1/4", 3/8", 1/2"	Slide ring PTFE/ O-ring Viton 665	B10700037-VI
Seal kit for angled swivel (Chemistry)	1/4", 3/8", 1/2"	Slide ring PTFE/ O-ring EPDM70 AP540	B10700037-1
Seal kit for angled swivel (Standard)	3/4", 1"	Slide ring PTFE/ O-ring EPDM70 AP370	B10700040
Seal kit for angled swivel (180°C)	3/4", 1"	Slide ring PTFE/ O-ring Viton 665	B10700040-VI
Seal kit for angled swivel (Chemistry)	3/4", 1"	Slide ring PTFE/ O-ring EPDM70 AP540	B10700040-CH
Hose stopper			
Hose stopper for OD-Diameter 10-34mm	blue	Plastic / rubber	B1071010301
Hose stopper for OD-Diameter 10-34mm	black	Plastic / rubber	B1071010302



Seal kit with mounting aid



Hose stopper blue



Fitting made of brass



Hose clamp, galvanized